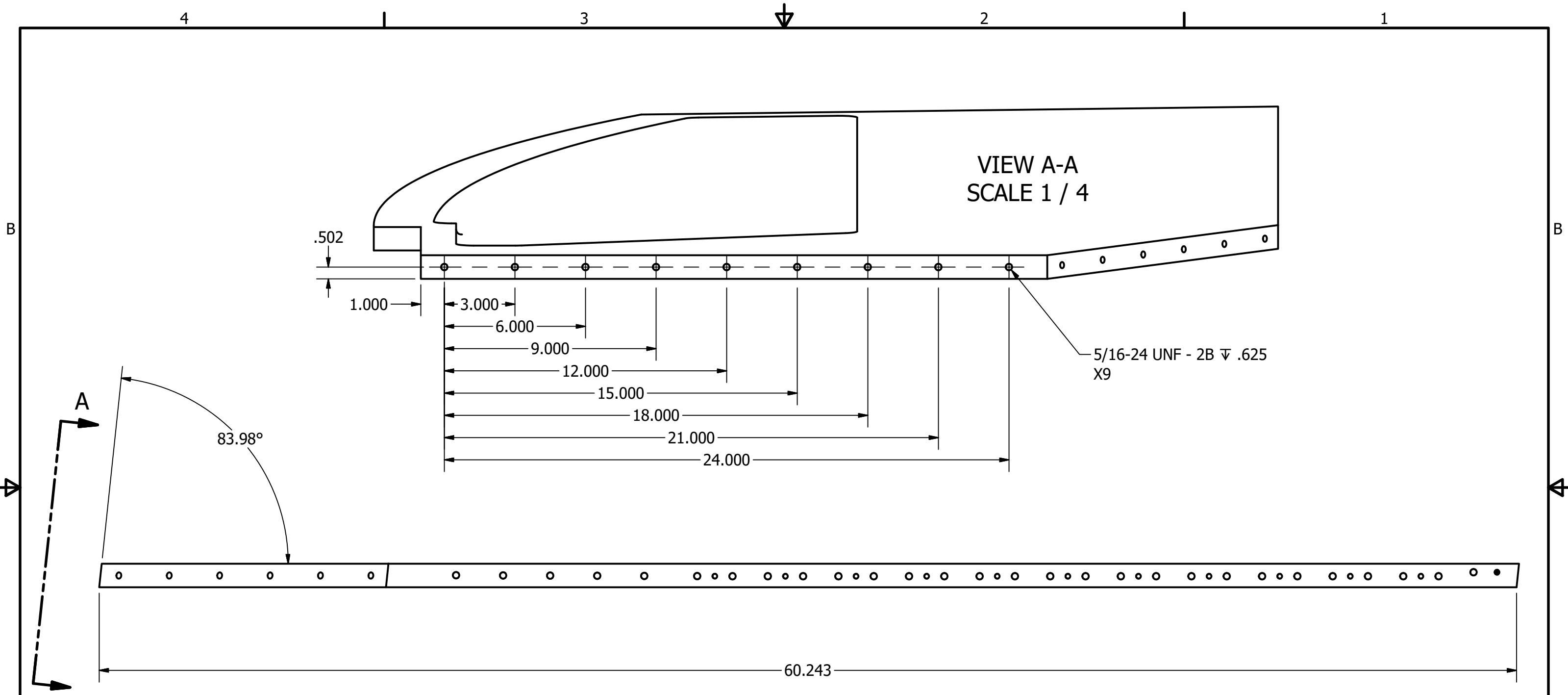


DRAWN Gary Swift TUNL	7/17/2019	SoLID HGC		
1-919-660-2668				
Material: Alum 6061-T651		TITLE Proto Assy Shell Side Plate - Right		
Unless Otherwise Specified Tolerances are: .xx = ± .01 Angles = ± 0.1° .xxx = ± .005	Break Edges: 0.010 Deburr Holes: 0.015			
Dim in Inches		SIZE B	DWG NO SP-10-01-05	REV
		SCALE 0.1 : 1	SHEET 1 OF 7	



VIEW A-A
SCALE 1 / 4

5/16-24 UNF - 2B \u2264 .625
X9

83.98\u00b0

- 1.000
- 3.000
- 6.000
- 9.000
- 12.000
- 15.000
- 18.000
- 21.000
- 24.000

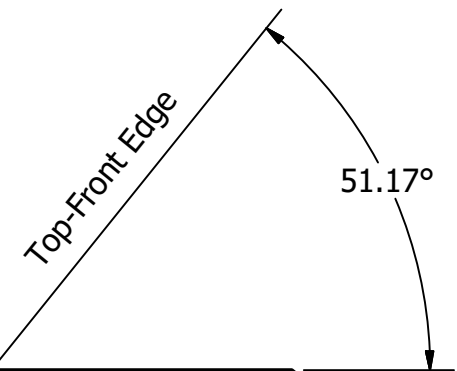
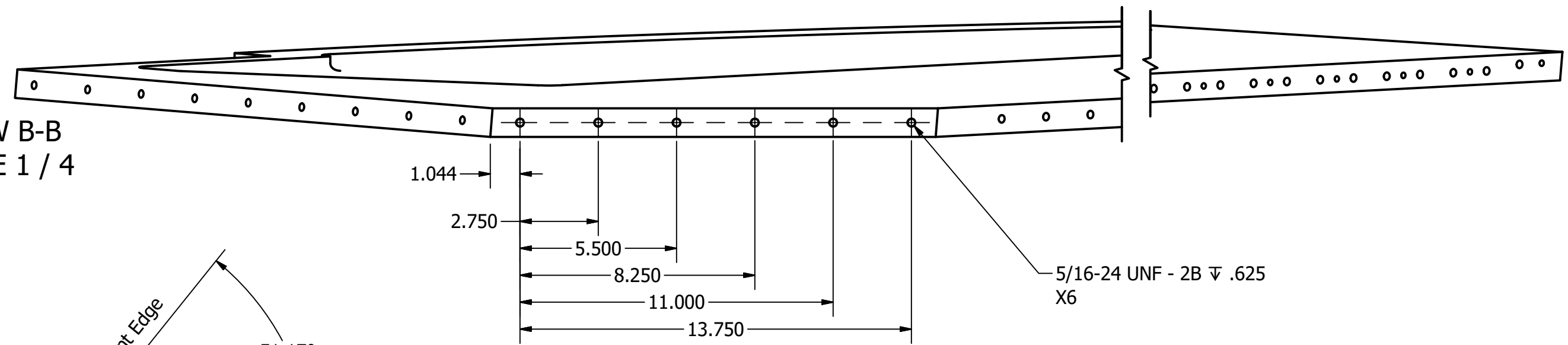
60.243

Right View

DRAWN Gary Swift TUNL	7/17/2019	SoLID HGC		
1-919-660-2668				
Material: Alum 6061-T651		TITLE Proto Assy Shell Side Plate - Right		
Unless Otherwise Specified Tolerances are: .xx = \u00b1 .01 Angles = \u00b1 0.1' .xxx = \u00b1 .005	Break Edges: 0.010 Deburr Holes: 0.015	SIZE B	DWG NO SP-10-01-05	REV
Dim in Inches		SCALE 1 / 4	SHEET 2 OF 7	

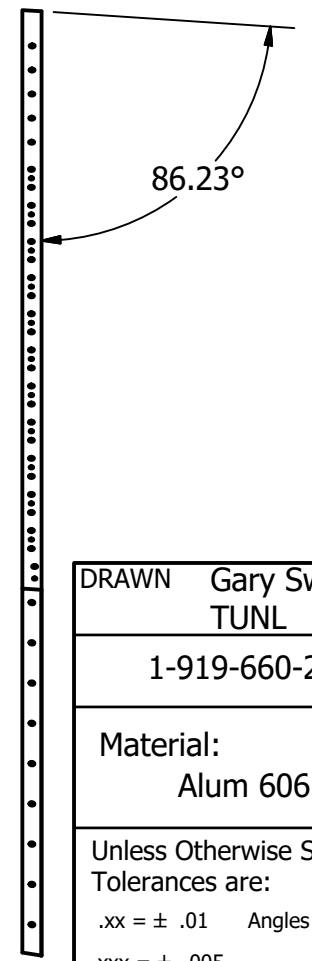
4 3 2 1

VIEW B-B
SCALE 1 / 4



26.628

Front View Rotated
so Top-Right Angle
shown Horizontal



Front

DRAWN Gary Swift TUNL	7/17/2019	SoLID HGC		
1-919-660-2668				
Material: Alum 6061-T651		TITLE Proto Assy Shell Side Plate - Right		
Unless Otherwise Specified Tolerances are: .xx = $\pm .01$ Angles = $\pm 0.1^\circ$.xxx = $\pm .005$	Break Edges: 0.010 Deburr Holes: 0.015	SIZE B	DWG NO SP-10-01-05	REV
Dim in Inches		SCALE 0.1 : 1	SHEET 3 OF 7	

B

B

A

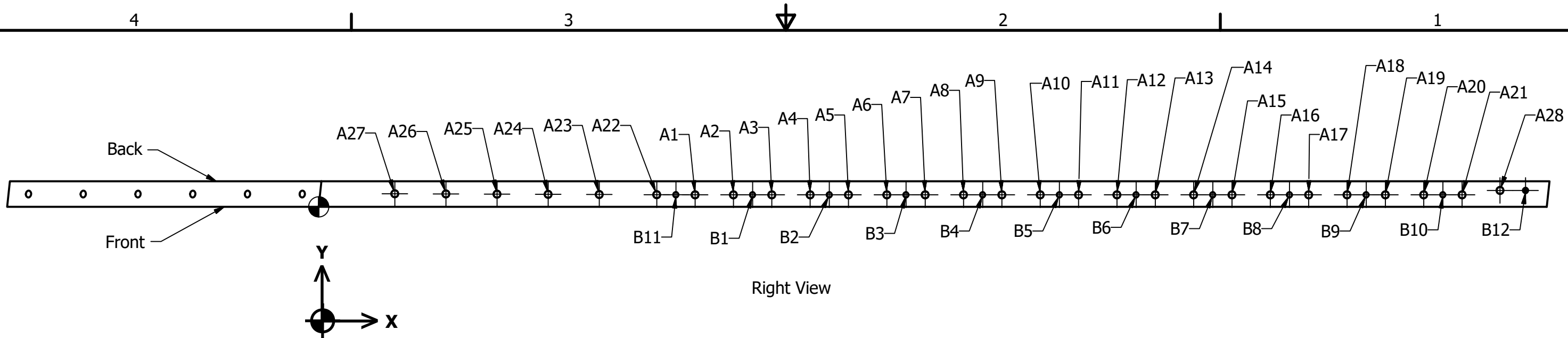
A

4

3

2

1

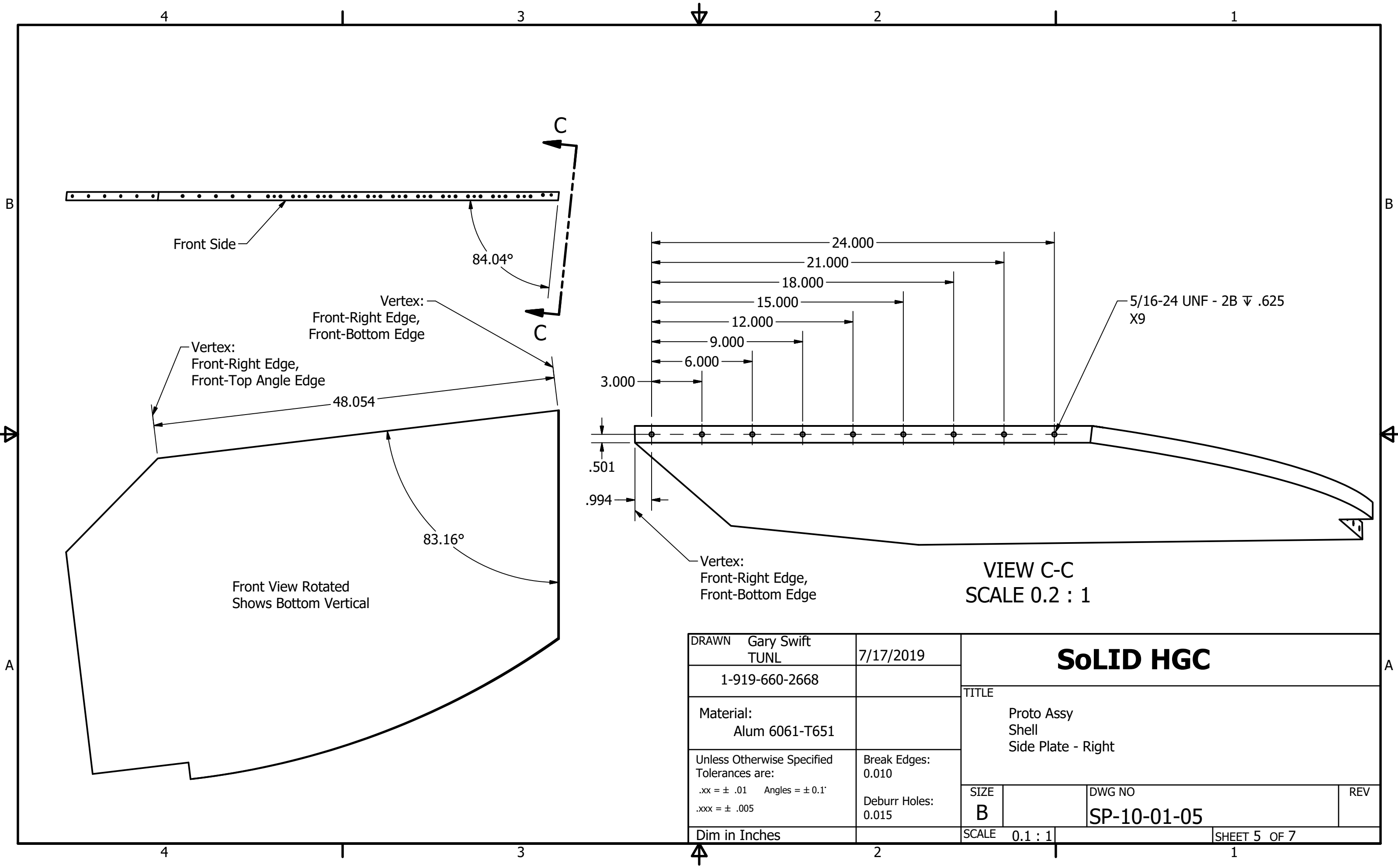


Right View

HOLE TABLE			
HOLE	XDIM	YDIM	DESCRIPTION
A1	14.729	.470	5/16-24 UNF - 2B ▽ .625
A2	16.229	.470	
A3	17.730	.470	
A4	19.231	.470	
A5	20.731	.470	
A6	22.232	.470	
A7	23.732	.470	
A8	25.233	.470	
A9	26.733	.470	
A10	28.234	.470	
A11	29.734	.470	
A12	31.235	.470	
A13	32.736	.470	
A14	34.236	.470	
A15	35.737	.470	
A16	37.237	.470	
A17	38.738	.470	
A18	40.238	.470	
A19	41.739	.470	
A20	43.240	.470	
A21	44.740	.470	
A22	13.228	.474	
A23	10.978	.482	
A24	8.978	.489	
A25	6.978	.497	
A26	4.978	.504	
A27	2.978	.511	
A28	46.224	.640	

HOLE TABLE			
HOLE	XDIM	YDIM	DESCRIPTION
B1	16.980	.470	1/4-20 UNC - 2B ▽ .500
B2	19.981	.470	
B3	22.982	.470	
B4	25.983	.470	
B5	28.984	.470	
B6	31.985	.470	
B7	34.986	.470	
B8	37.988	.470	
B9	40.989	.470	
B10	43.990	.470	
B11	13.979	.472	
B12	47.224	.640	

DRAWN Gary Swift TUNL	7/17/2019	SoLID HGC		
1-919-660-2668				
Material: Alum 6061-T651		Proto Assy Shell Side Plate - Right		
Unless Otherwise Specified Tolerances are: .xx = ± .01 Angles = ± 0.1' .xxx = ± .005	Break Edges: 0.010 Deburr Holes: 0.015	SIZE B	DWG NO SP-10-01-05	REV
Dim in Inches		SCALE 1 / 4	SHEET 4 OF 7	



Front Side

84.04°

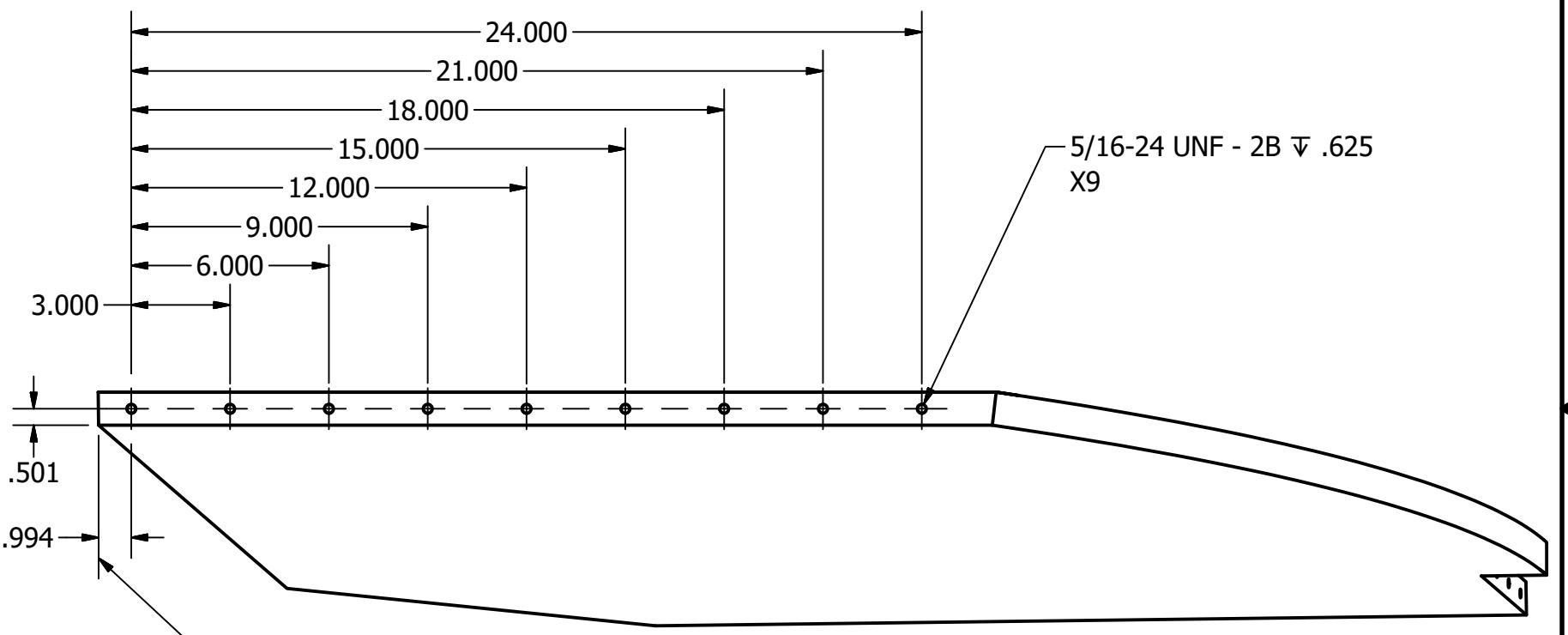
Vertex:
Front-Right Edge,
Front-Bottom Edge

Vertex:
Front-Right Edge,
Front-Top Angle Edge

48.054

83.16°

Front View Rotated
Shows Bottom Vertical



5/16-24 UNF - 2B V .625
X9

3.000

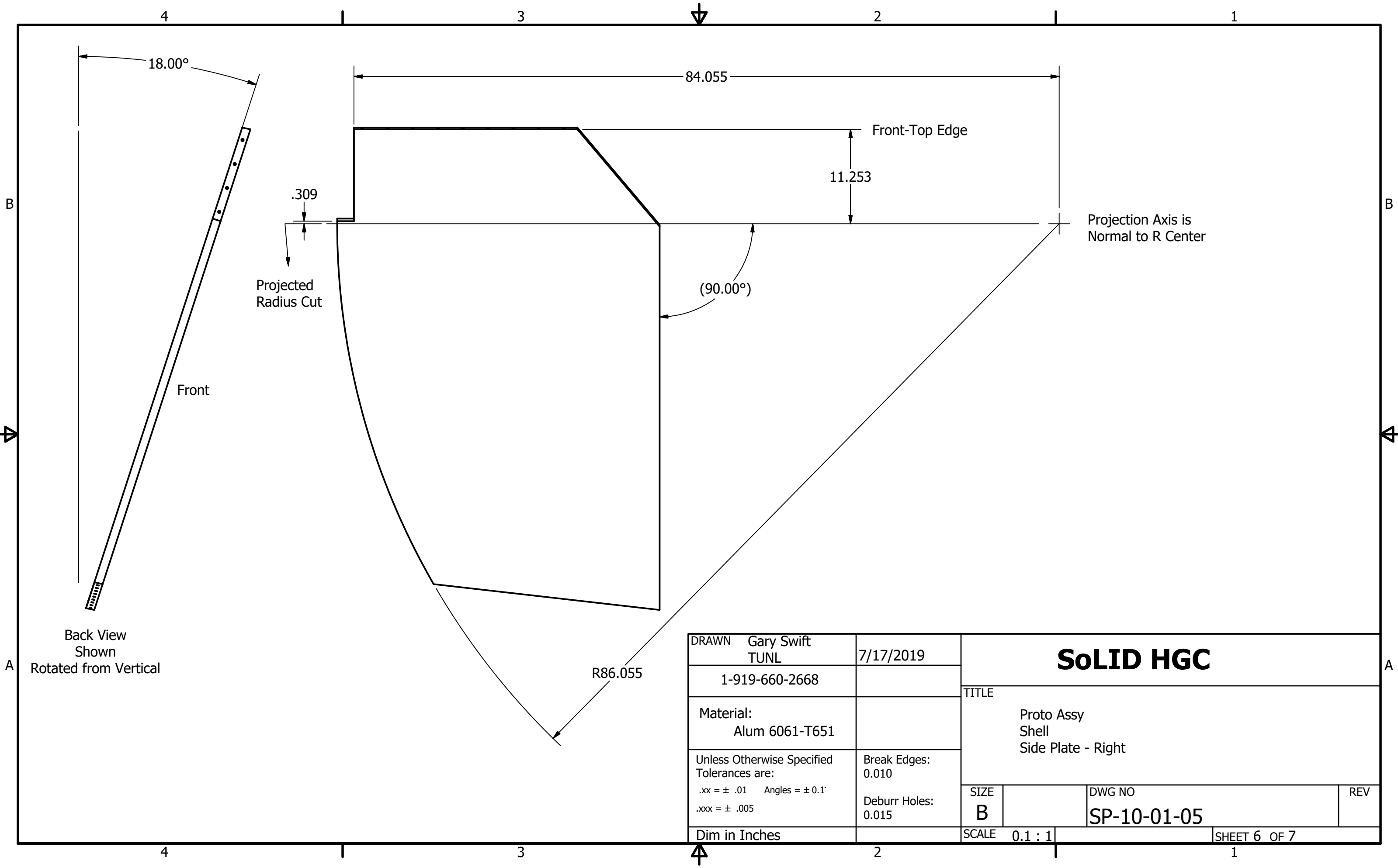
.501

.994

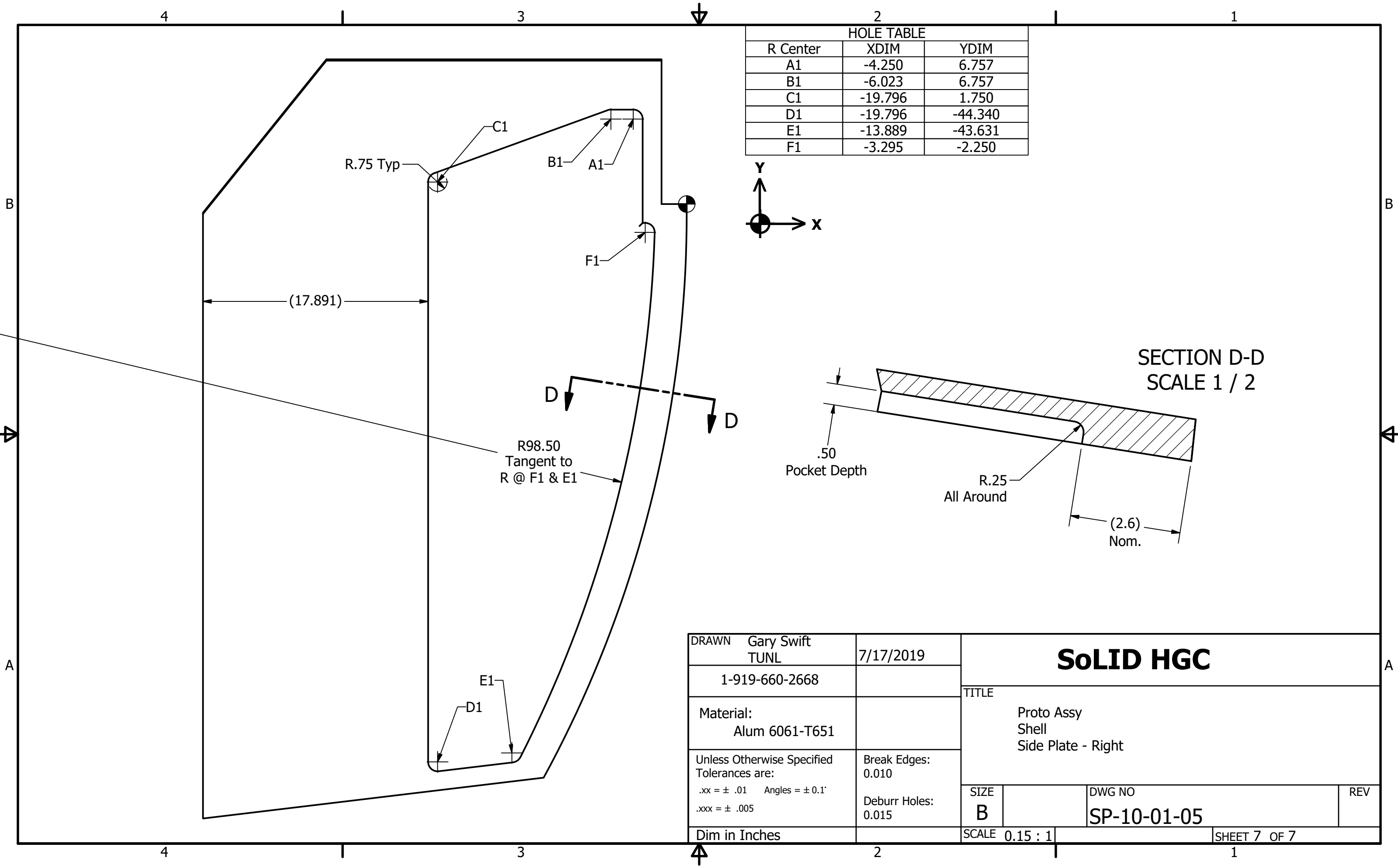
Vertex:
Front-Right Edge,
Front-Bottom Edge

VIEW C-C
SCALE 0.2 : 1

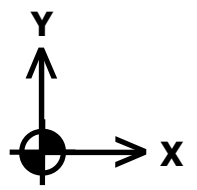
DRAWN Gary Swift TUNL	7/17/2019	SoLID HGC		
1-919-660-2668				
Material: Alum 6061-T651		TITLE Proto Assy Shell Side Plate - Right		
Unless Otherwise Specified Tolerances are: .xx = ± .01 Angles = ± 0.1° .xxx = ± .005	Break Edges: 0.010 Deburr Holes: 0.015			
Dim in Inches		SIZE B	DWG NO SP-10-01-05	REV
		SCALE 0.1 : 1	SHEET 5 OF 7	



DRAWN Gary Swift TUNL	7/17/2019	SoLID HGC		
1-919-660-2668				
Material: Alum 6061-T651		TITLE Proto Assy Shell Side Plate - Right		
Unless Otherwise Specified Tolerances are: .xx = ± .01 Angles = ± 0.1' .xxx = ± .005	Break Edges: 0.010 Deburr Holes: 0.015			
Dim in Inches		SIZE B	DWG NO SP-10-01-05	REV
		SCALE 0.1 : 1	SHEET 6 OF 7	



HOLE TABLE		
R Center	XDIM	YDIM
A1	-4.250	6.757
B1	-6.023	6.757
C1	-19.796	1.750
D1	-19.796	-44.340
E1	-13.889	-43.631
F1	-3.295	-2.250



SECTION D-D
SCALE 1 / 2

DRAWN Gary Swift TUNL	7/17/2019	SoLID HGC		
1-919-660-2668				
Material: Alum 6061-T651		TITLE Proto Assy Shell Side Plate - Right		
Unless Otherwise Specified Tolerances are: .xx = ± .01 Angles = ± 0.1° .xxx = ± .005	Break Edges: 0.010 Deburr Holes: 0.015			
Dim in Inches		SIZE B	DWG NO SP-10-01-05	REV
		SCALE 0.15 : 1	SHEET 7 OF 7	