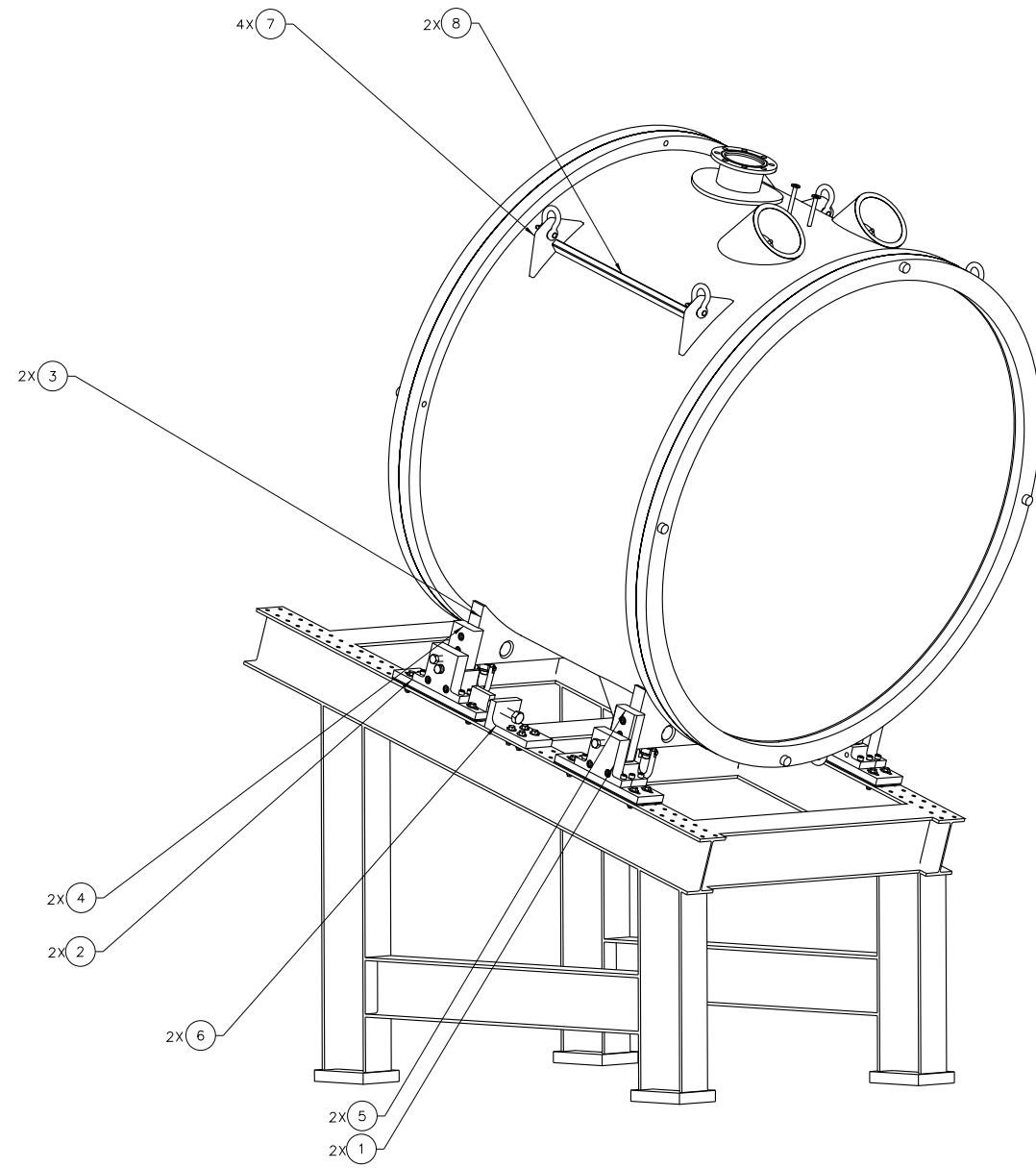


REVISION HISTORY				
ZONE	REV	DESCRIPTION	DATE	APPROVED



QTY	ITEM	PART OR IDENTIFYING NO.	DESCRIPTION OR IDENTIFICATION	MATERIAL SPECIFICATION	NOTES
2	1	67165-00051	FORWARD MOUNT ASSEMBLY	-	-
2	2	67165-00052	AFT MOUNT ASSEMBLY	-	-
2	3	67165-00053	RIB	-	-
2	4	67165-00054	AFT FOOT	-	-
2	5	67165-00055	FORWARD FOOT	-	-
2	6	67165-00056	JACK BLOCK	-	-
4	7	67165-00057	LIFTING LUG	-	-
2	8	67165-00058	LIFTING LUG RIB	-	-

DOCUMENT CONTROL STAMP: DRAWN BY: TUDDES, CHECKED: TURDES, APPROVED: [Signature], DATE: 06/15/11.

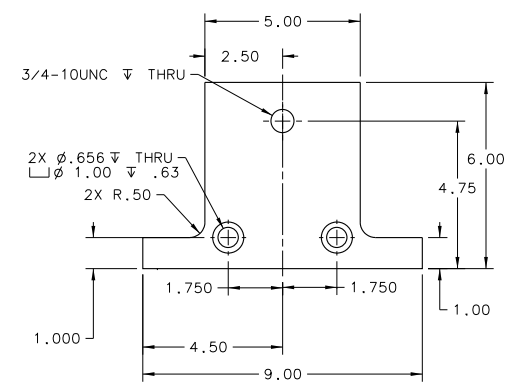
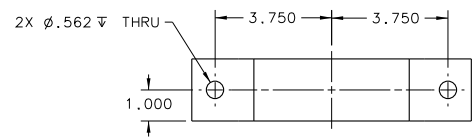
FINISH: UNLESS OTHERWISE NOTED, SURFACES TO BE BURST & BREAK ALL SHARP EDGES. DO NOT SCALE DRAWING.

TRACKING NO.: N/A. APPROVALS: [Signature], DATE: 06/15/11.

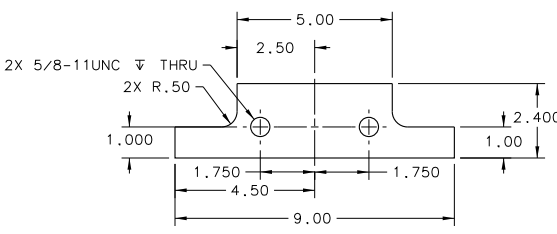
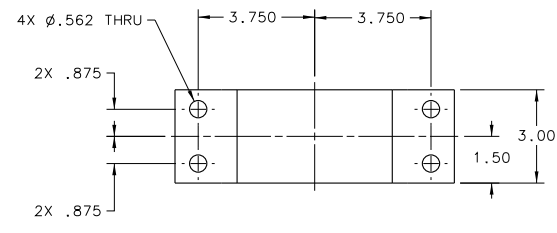
UNITED STATES DEPARTMENT OF ENERGY, Jefferson Lab, HALL C SHMS HEAVY GAS CERENKOV DETECTOR ASSY.

SIZE DWG. NO.: E, 67165-00050. SCALE: NONE. SHEET 1 OF X.

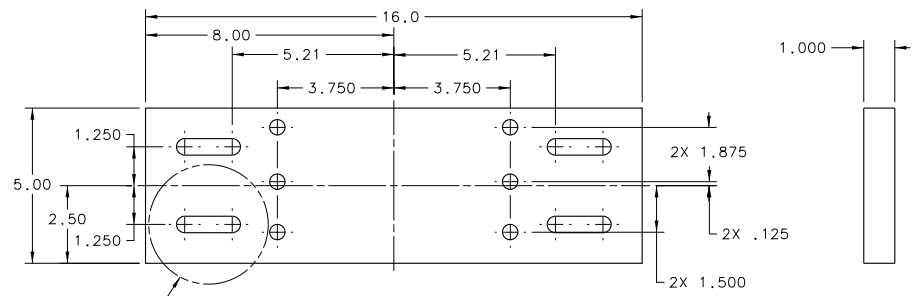
REVISION HISTORY			
ZONE	REV	DESCRIPTION	DATE



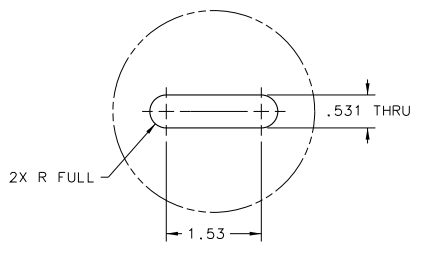
JACKING BLOCK, FWD, ITEM 1



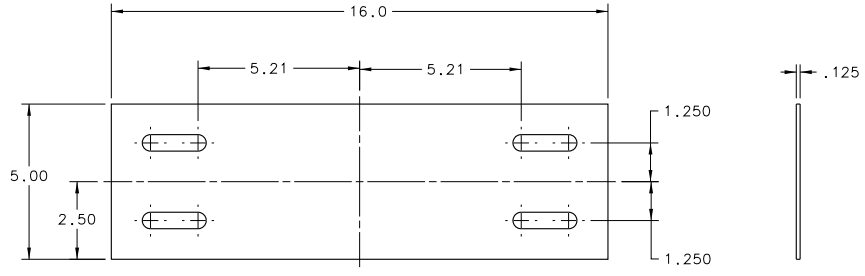
CRADLE BLOCK, FWD, ITEM 2



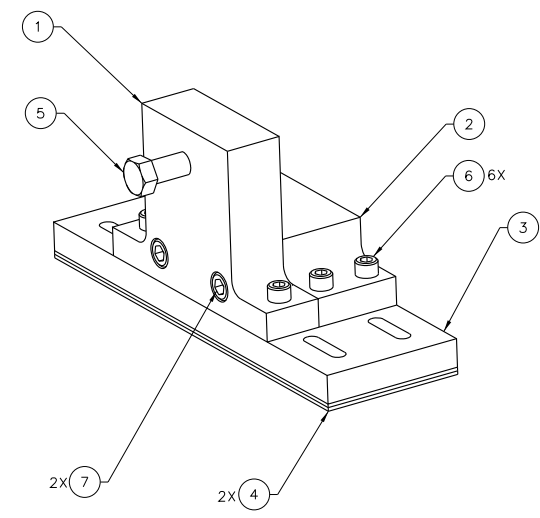
BASE PLATE, ITEM 3



DETAIL A  
TYPICAL 4 PLACES



SHIM, ITEM 4  
FOR DETAILS NOT SHOWN, SEE DETAIL A

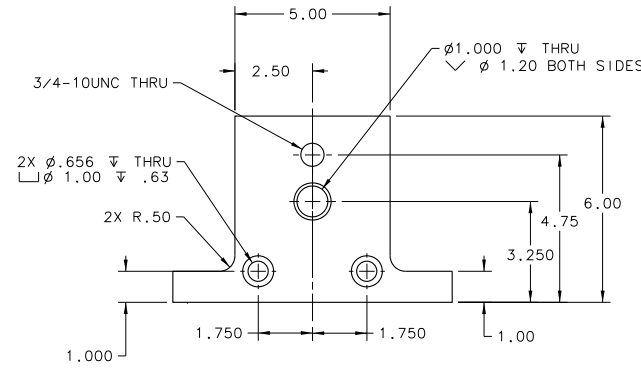
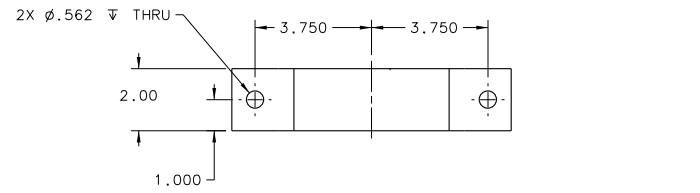


FORWARD MOUNT ASSEMBLY

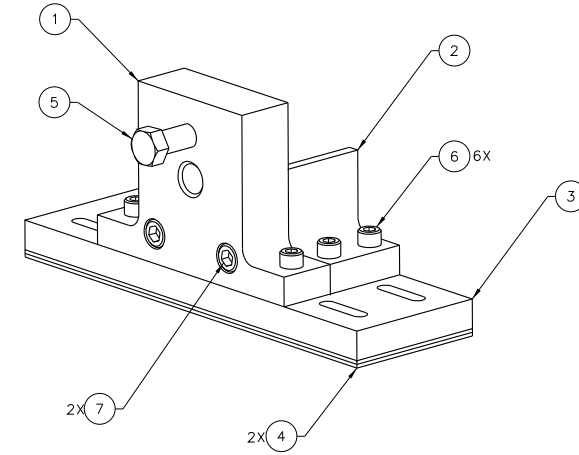
1. QUANTITIES SHOWN ARE FOR ONE ASSEMBLY. TWO ASSEMBLIES WILL BE REQUIRED.
2. MATERIAL CERTS REQUIRED FOR ALL MATERIALS.

QTY	ITEM	PART OR IDENTIFYING NO.	DESCRIPTION OR IDENTIFYING NO.	MATERIAL SPECIFICATION	NOTES
2	7	-	SHCS 5/8-11UNC X 2.50	STEEL	-
6	6	-	SHCS 1/2-13UNC X 1.75	STEEL	-
1	5	-	HEX BOLT 3/4-10UNC X 4.00	GRADE 5 OR BETTER	-
2	4	-	SHIM	STAINLESS STEEL	-
1	3	-	BASE PLATE	STAINLESS STEEL	-
1	2	-	CRADLE BLOCK, FWD	STAINLESS STEEL	-
1	1	-	JACKING BLOCK, FWD	STAINLESS STEEL	-

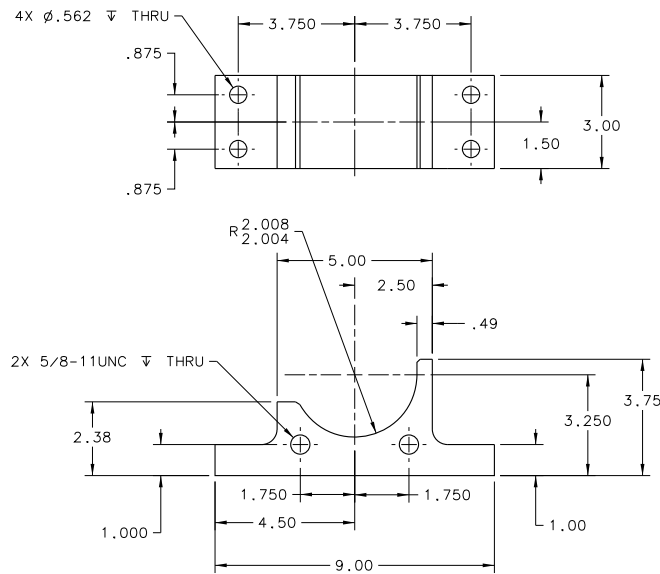
DOCUMENT CONTROL STAMP	DATE & TIME PERMITTED TO BE USED UNLESS OTHERWISE SPECIFIED DIMENSIONS ARE IN INCHES TOLERANCES ARE: FRACTIONS DECIMAL ANGLES ± N/A .XX ± .01 ± .50°	TRACKING NO. N/A	United States Department of Energy <b>Jefferson Lab</b> Newport News Virginia
MATERIAL NOTED	THIRD ANGLE PROJECTION	APPROVALS DRAWN CHECKED APPROVED	HALL C SHMS HEAVY GAS CERENKOV FORWARD MOUNT ASSEMBLY
FINISH UNLESS OTHERWISE NOTED SURFACES DEBUR & BREAK ALL SHARP EDGES	DO NOT SCALE DRAWING	DATE 06/14/11	SIZE DWG. NO. 67165-00051 SCALE NONE SHEET 1 OF 1



JACKING BLOCK, AFT, ITEM 1



AFT MOUNT ASSEMBLY



CRADLE BLOCK, AFT, ITEM 2

1. QUANTITIES SHOWN ARE FOR ONE ASSEMBLY. TWO ASSEMBLIES WILL BE REQUIRED.
2. MATERIAL CERTS REQUIRED FOR ALL MATERIALS.

QTY	ITEM	PART OR IDENTIFYING NO.	DESCRIPTION OR IDENTIFICATION	MATERIAL SPECIFICATION	NOTES
2	7	-	SHCS 5/8-11UNC X 2.50	STEEL	*
6	6	-	SHCS 1/2-13UNC X 1.75	STEEL	-
1	5	-	HEX BOLT 3/4-10UNC X 4.00	GRADE 5 OR BETTER	-
2	4	XXXXX-XXXXX-4	SHIM	-	-
1	3	XXXXX-XXXXX-3	BASE PLATE	-	-
1	2	-	CRADLE BLOCK, AFT	STAINLESS STEEL	-
1	1	-	JACKING BLOCK, AFT	STAINLESS STEEL	-

DOCUMENT CONTROL STAMP	DATE & TIME WHEN ISSUED: 06/15/11 UNLESS OTHERWISE SPECIFIED DIMENSIONS ARE IN INCHES TOLERANCES ARE: FRACTIONS DECIMAL ANGLES ± N/A .XX ± .01 ± .50° XXX ± .005	TRACKING NO. N/A	United States Department of Energy <b>Jefferson Lab</b> Central Jefferson National Accelerator Facility Newport News, Virginia
MATERIAL NOTED	THIRD ANGLE PROJECTION	APPROVALS DATE DRAWN TURDES 06/15/11 CHECKED APPROVED APPROVED	HALL C SHMS HEAVY GAS CERENKOV AFT MOUNT ASSEMBLY SIZE DWG. NO. 67165-00052 SCALE NONE 67165-00052 SHEET 1 OF 1

8

7

6

5

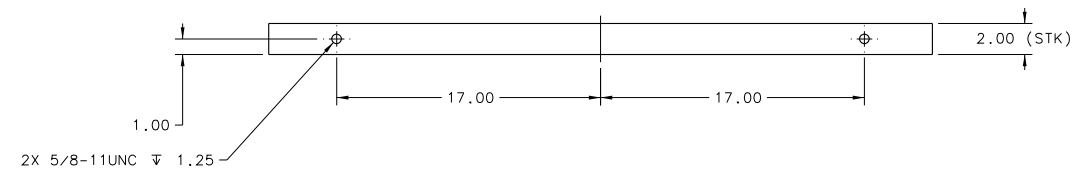
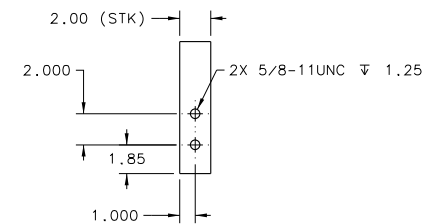
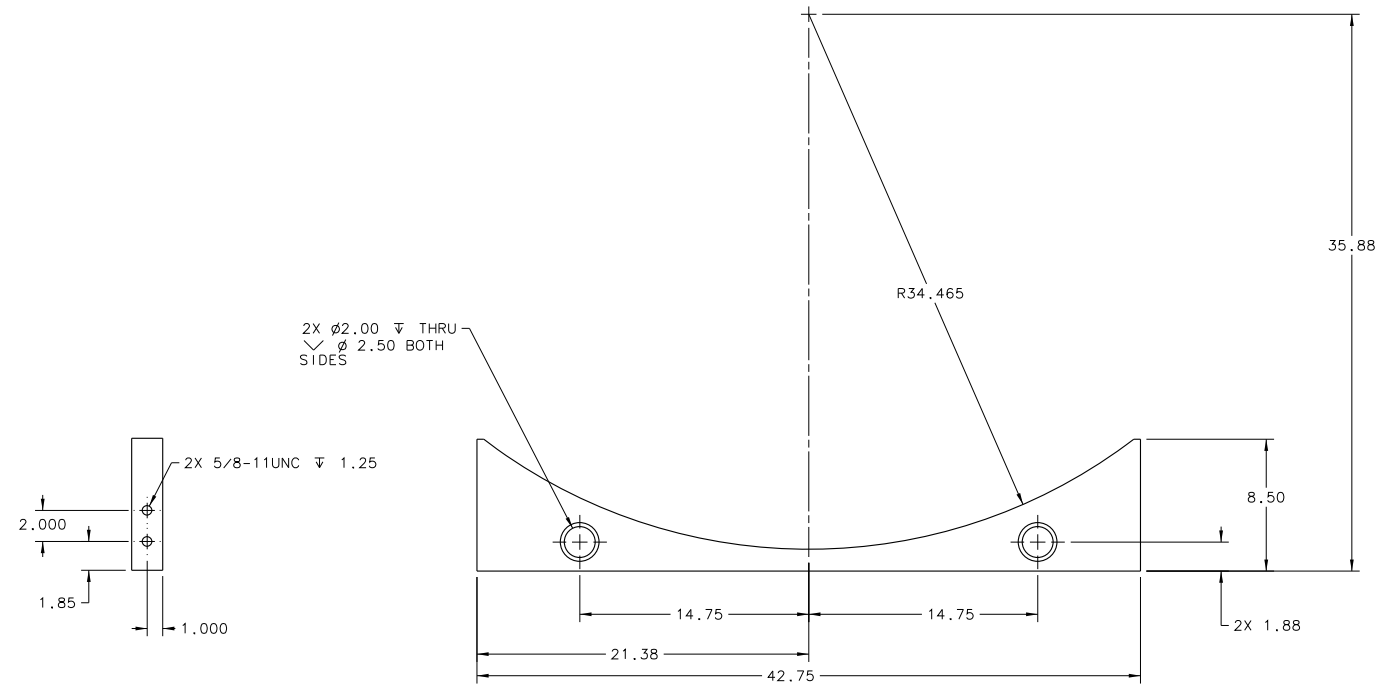
4

3

2

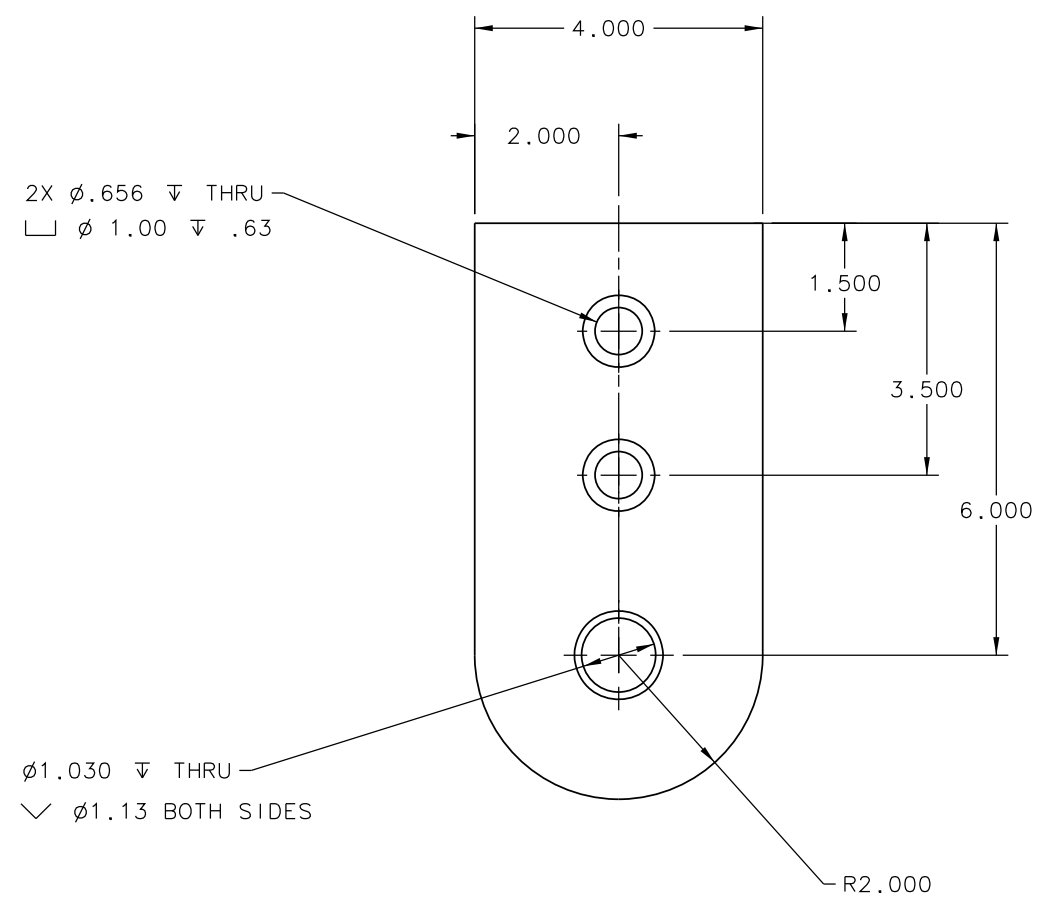
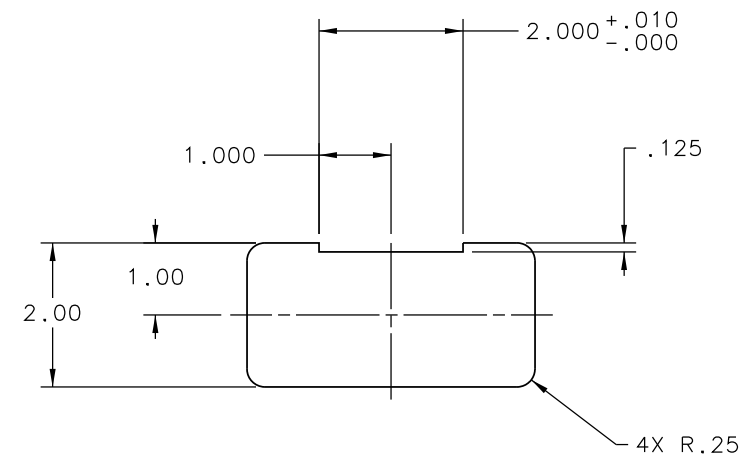
1

REVISION HISTORY			
ZONE	REV	DESCRIPTION	DATE



1		-		RIB		ALUMINUM		-	
QTY	ITEM	PART OR IDENTIFYING NO.		NOMENCLATURE OR DESCRIPTION		MATERIAL SPECIFICATION		NOTES	
PARTS LIST									
EACH SHEET OF MULTI-SHEET DRAWINGS SHALL ALWAYS HAVE THE SAME REVISION LEVEL.									
DOCUMENT CONTROL STAMP		DATE & TIME PER ISSUE CYCLE UNLESS OTHERWISE SPECIFIED		TRACKING NO.		United States Department of Energy			
MATERIAL		DIMENSIONS ARE IN INCHES UNLESS OTHERWISE SPECIFIED		APPROVALS		DATE		Jefferson Lab Newport News Virginia	
NOTED		THIRD ANGLE PROJECTION		DRAWN		06/16/11		HALL C SHMS HEAVY GAS CERENKOV RIB	
FINISH UNLESS OTHERWISE NOTED		FRACTIONS DECIMAL ANGLES		CHECKED				SIZE DWG. NO. 67165-00053	
DO NOT SCALE DRAWING		.XX ± .01 .XXX ± .005		APPROVED				SCALE NONE 67165-00053 SHEET 1 OF 1	

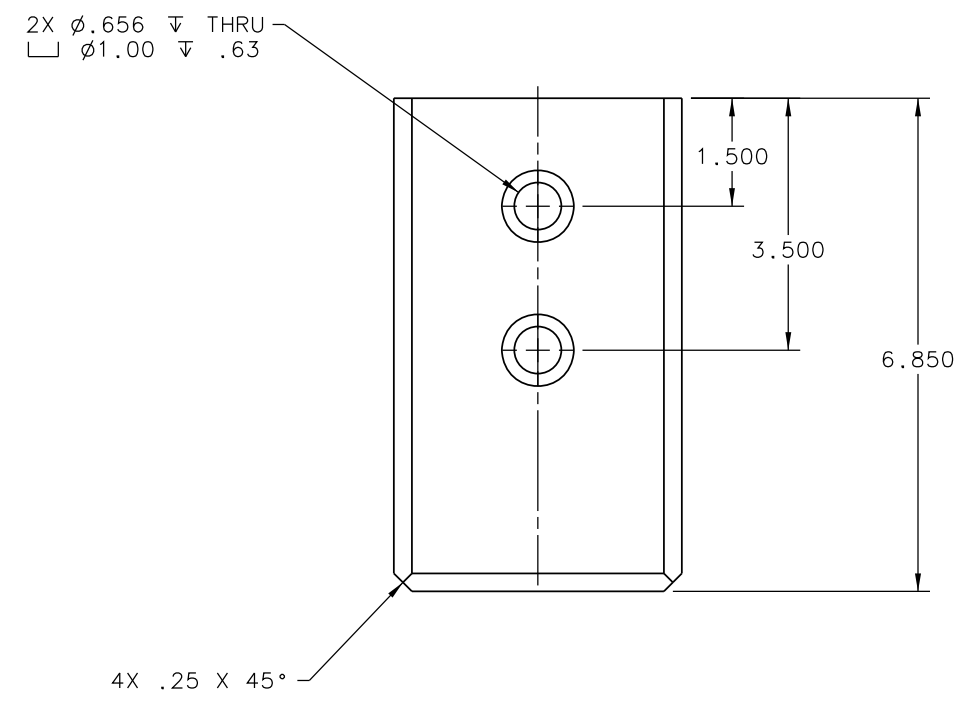
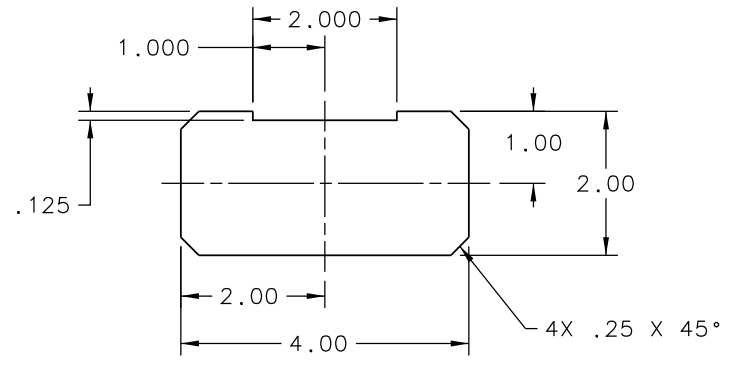
REVISION HISTORY				
ZONE	REV	DESCRIPTION	DATE	APPROVED



1	1	-	AFT FOOT	STAINLESS STEEL	-
QTY REQD	ITEM NO.	PART OR IDENTIFYING NO.	NOMENCLATURE OR DESCRIPTION	MATERIAL SPECIFICATION	NOTES

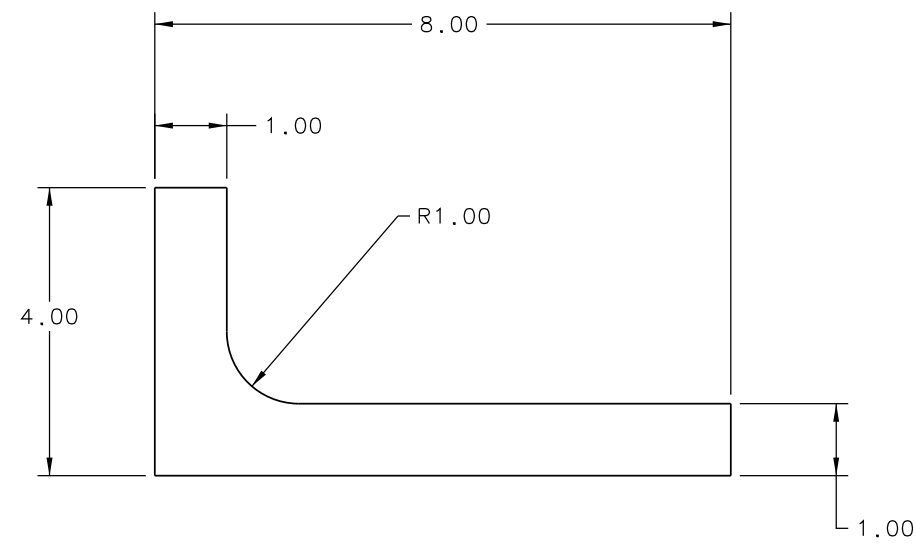
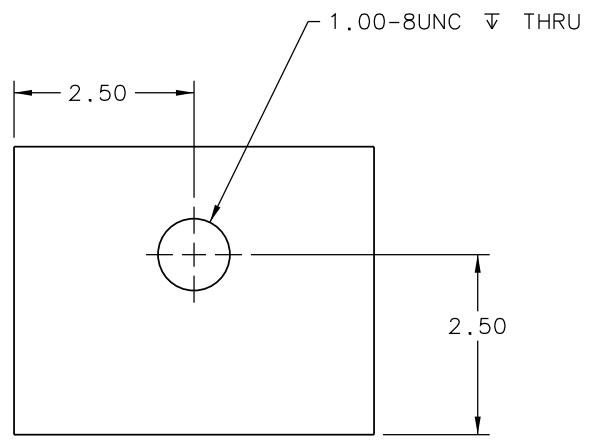
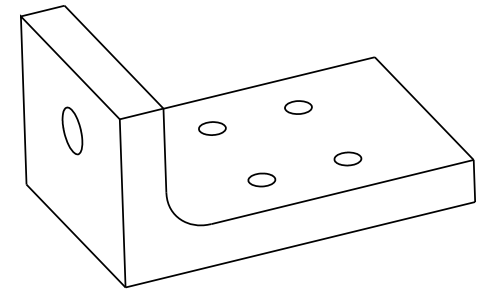
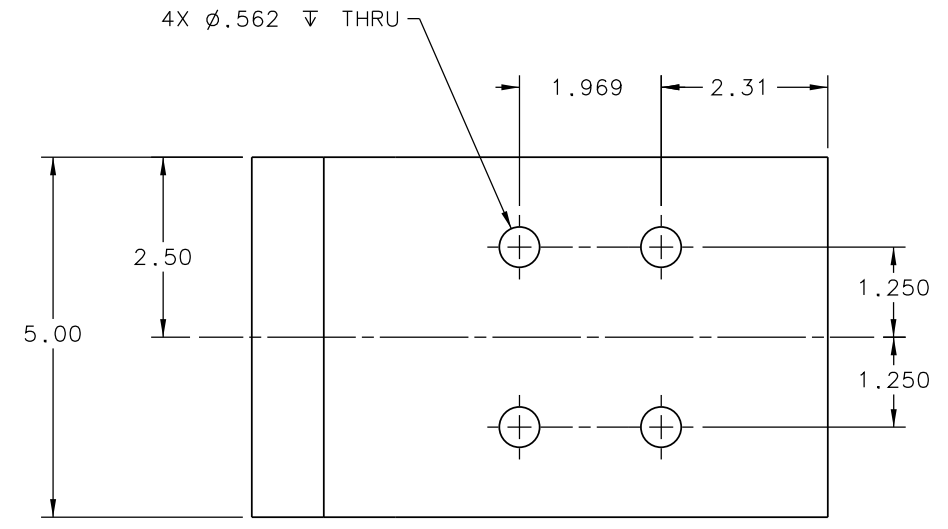
DOCUMENT CONTROL STAMP	DIM & TOL PER ASME Y14.5 UNLESS OTHERWISE SPECIFIED DIMENSIONS ARE IN INCHES TOLERANCES ARE: FRACTIONS DECIMAL ANGLES $\pm$ N/A .X $\pm$ .1 $\pm$ .50° .XX $\pm$ .01 .XXX $\pm$ .005	TRACKING NO. N/A		United States Department of Energy <b>Jefferson Lab</b> Thomas Jefferson National Accelerator Facility Newport News Virginia	
		APPROVALS		DATE	
MATERIAL NOTED	THIRD ANGLE PROJECTION	DRAWN FURCHES	06/16/11		
FINISH MACHINED SURFACES DEBURR & BREAK ALL SHARP EDGES		CHECKED			
DO NOT SCALE DRAWING		APPROVED			
		APPROVED			
		SIZE D	DWG. NO. 67165-00054		REV. -
		SCALE NONE	USED ON ASSY NO. 67165-00050	SHEET 1	OF 1

REVISION HISTORY				
ZONE	REV	DESCRIPTION	DATE	APPROVED



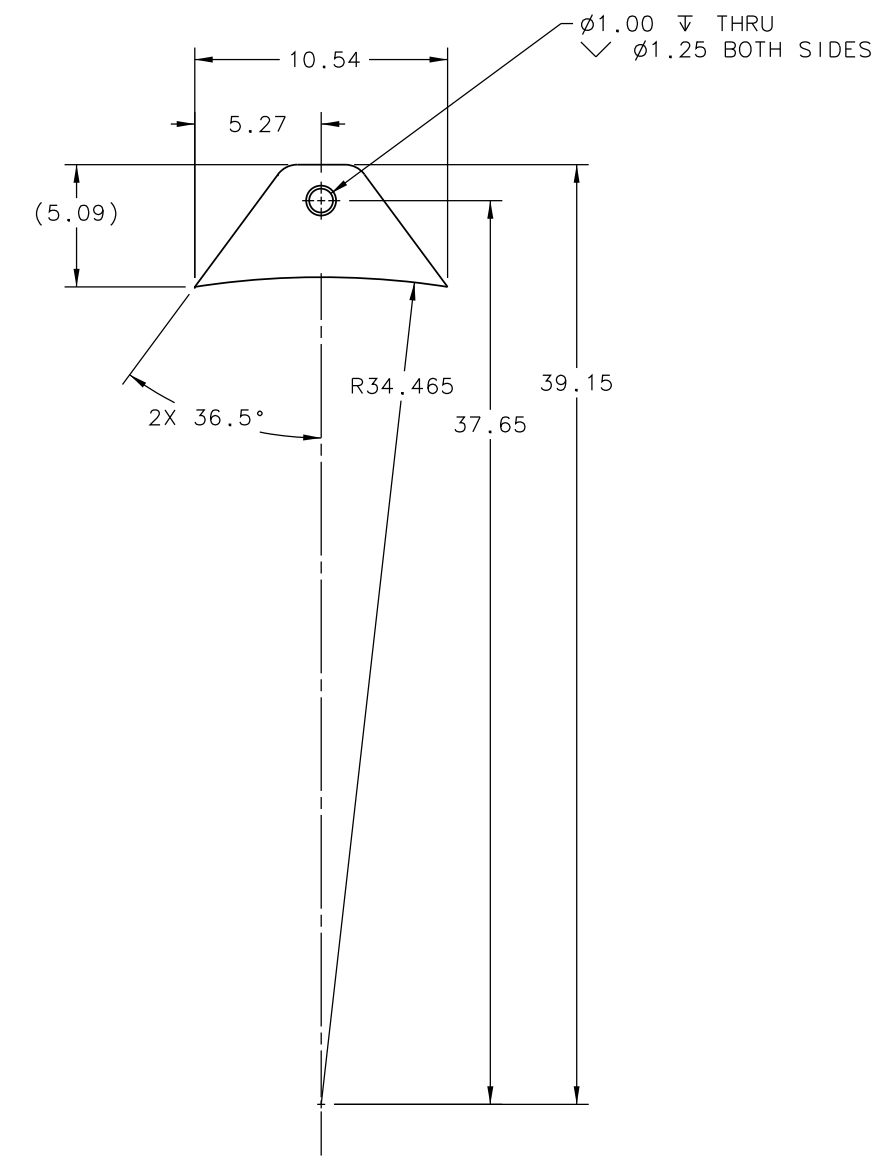
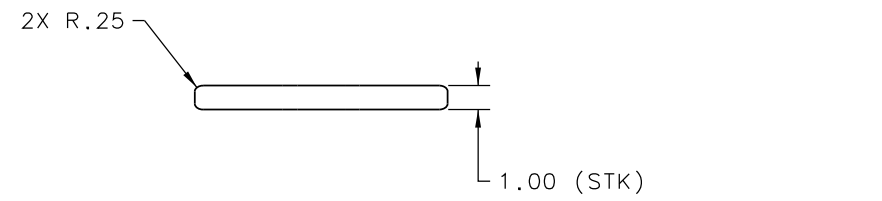
1	1	-	FORWARD FOOT	STAINLESS STEEL	-
QTY REQD	ITEM NO.	PART OR IDENTIFYING NO.	NOMENCLATURE OR DESCRIPTION	MATERIAL SPECIFICATION	NOTES
PARTS LIST					
DOCUMENT CONTROL STAMP		DIM & TOL PER ASME Y14.5 UNLESS OTHERWISE SPECIFIED DIMENSIONS ARE IN INCHES TOLERANCES ARE: FRACTIONS DECIMAL ANGLES ± N/A .X ± .1 ± .50° .XX ± .01 .XXX ± .005		TRACKING NO. N/A	
MATERIAL NOTED		THIRD ANGLE PROJECTION		United States Department of Energy <b>Jefferson Lab</b> Thomas Jefferson National Accelerator Facility Newport News Virginia	
FINISH MACHINED SURFACES DEBURR & BREAK ALL SHARP EDGES		125 UNLESS OTHERWISE NOTED		APPROVALS DATE	
DO NOT SCALE DRAWING		DRAWN FURCHES		06/16/11	
		CHECKED		APPROVED	
		APPROVED		APPROVED	
		SCALE NONE		USED ON ASSY NO. 67165-00050 SHEET 1 OF 1	
			HALL C SHMS HEAVY GAS CERENKOV FORWARD FOOT		
			SIZE DWG. NO. 67165-00055 REV. -		

REVISION HISTORY				
ZONE	REV	DESCRIPTION	DATE	APPROVED



1	1	-	JACK BLOCK	STEEL	-
QTY REQD	ITEM NO.	PART OR IDENTIFYING NO.	NOMENCLATURE OR DESCRIPTION	MATERIAL SPECIFICATION	NOTES
PARTS LIST					
DOCUMENT CONTROL STAMP			TRACKING NO. N/A		United States Department of Energy
MATERIAL NOTED			APPROVALS		DATE 06/16/11
FINISH MACHINED SURFACES DEBURR & BREAK ALL SHARP EDGES			DRAWN FURCHES		CHECKED
DO NOT SCALE DRAWING			APPROVED		APPROVED
DIM & TOL PER ASME Y14.5 UNLESS OTHERWISE SPECIFIED DIMENSIONS ARE IN INCHES TOLERANCES ARE: FRACTIONS DECIMAL ANGLES ± N/A .X ± .1 ± .50° .XX ± .01 .XXX ± .005			THIRD ANGLE PROJECTION		Jefferson Lab Thomas Jefferson National Accelerator Facility Newport News Virginia
			APPROVED		SIZE DWG. NO. D 67165-00056
			SCALE NONE		USED ON ASSY NO. 67165-00050 SHEET 1 OF 1

REVISION HISTORY				
ZONE	REV	DESCRIPTION	DATE	APPROVED



1	1	-	LIFTING LUG	ALUMINUM	-
QTY REQD	ITEM NO.	PART OR IDENTIFYING NO.	NOMENCLATURE OR DESCRIPTION	MATERIAL SPECIFICATION	NOTES
PARTS LIST					
DOCUMENT CONTROL STAMP			TRACKING NO. N/A		United States Department of Energy
MATERIAL NOTED			APPROVALS		Jefferson Lab Thomas Jefferson National Accelerator Facility Newport News Virginia
FINISH MACHINED SURFACES DEBURR & BREAK ALL SHARP EDGES			DRAWN FURCHES		HALL C SHMS HEAVY GAS CERENKOV LIFTING LUG
DO NOT SCALE DRAWING			CHECKED		REV. -
			APPROVED		DATE 06/16/11
			APPROVED		SIZE DWG. NO. D 67165-00057
			SCALE NONE		USED ON ASSY NO. 67165-00050 SHEET 1 OF 1



8 7 6 5 4 3 2 1

REVISION HISTORY				
ZONE	REV	DESCRIPTION	DATE	APPROVED

D

D

C

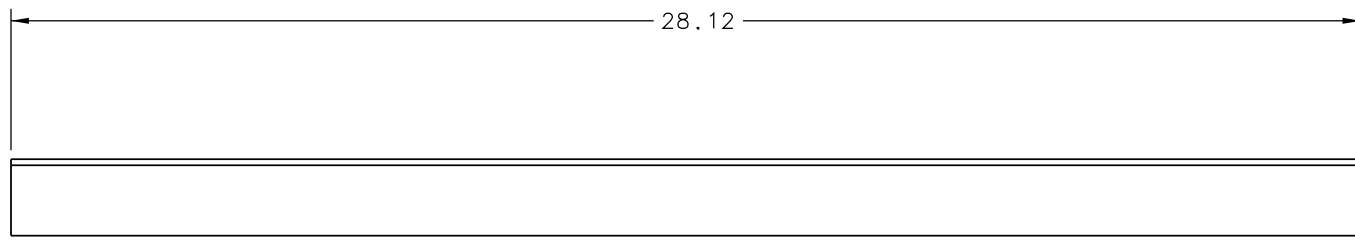
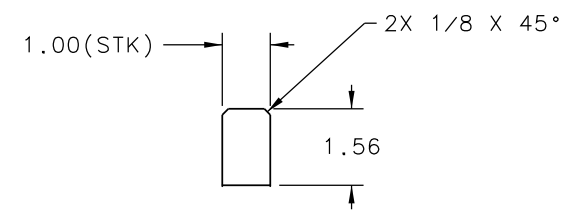
C

B

B

A

A



QTY REQD	ITEM NO.	PART OR IDENTIFYING NO.	NOMENCLATURE OR DESCRIPTION	MATERIAL SPECIFICATION	NOTES
1	1	-	LIFTING LUG RIB	ALUMINUM	-

DOCUMENT CONTROL STAMP	DIM & TOL PER ASME Y14.5 UNLESS OTHERWISE SPECIFIED DIMENSIONS ARE IN INCHES TOLERANCES ARE: FRACTIONS DECIMAL ANGLES ± N/A .X ± .1 ± .50° .XX ± .01 .XXX ± .005	TRACKING NO. N/A		United States Department of Energy Jefferson Lab Thomas Jefferson National Accelerator Facility Newport News Virginia	
		APPROVALS		DATE	
MATERIAL NOTED	THIRD ANGLE PROJECTION	DRAWN FURCHES	06/16/11		
FINISH MACHINED SURFACES 125 ✓ UNLESS OTHERWISE NOTED DEBURR & BREAK ALL SHARP EDGES		CHECKED			
		APPROVED			
DO NOT SCALE DRAWING		APPROVED	SIZE DWG. NO. <b>D</b> 67165-00058		REV. -
		SCALE	NONE	USED ON ASSY NO.	67165-00050
		SHEET		1	OF 1

8 7 6 5 4 3 2 1