

e

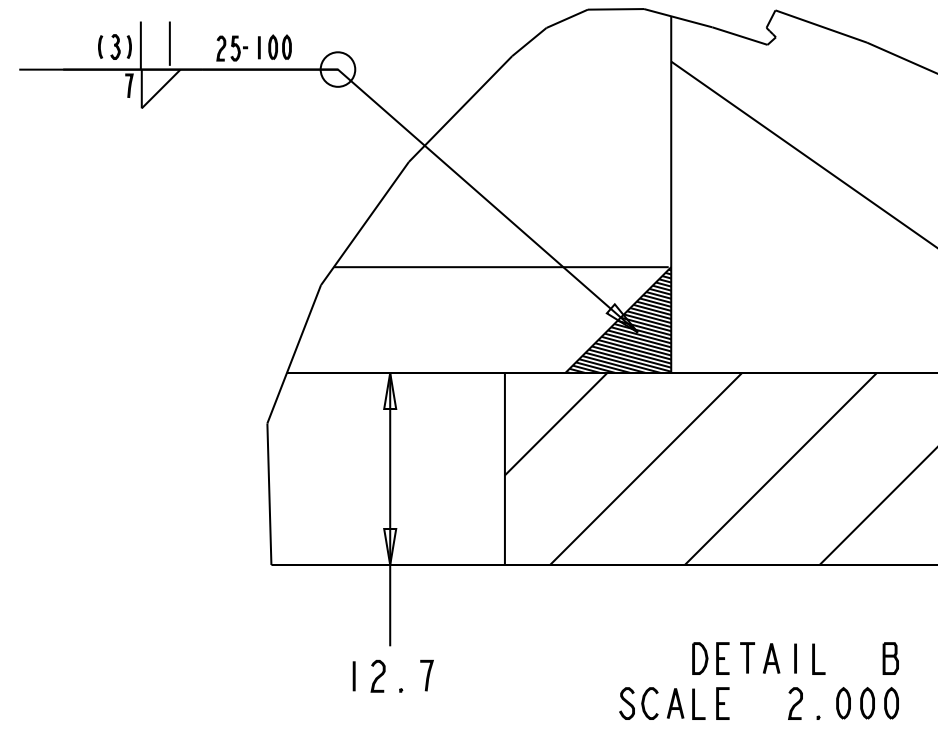
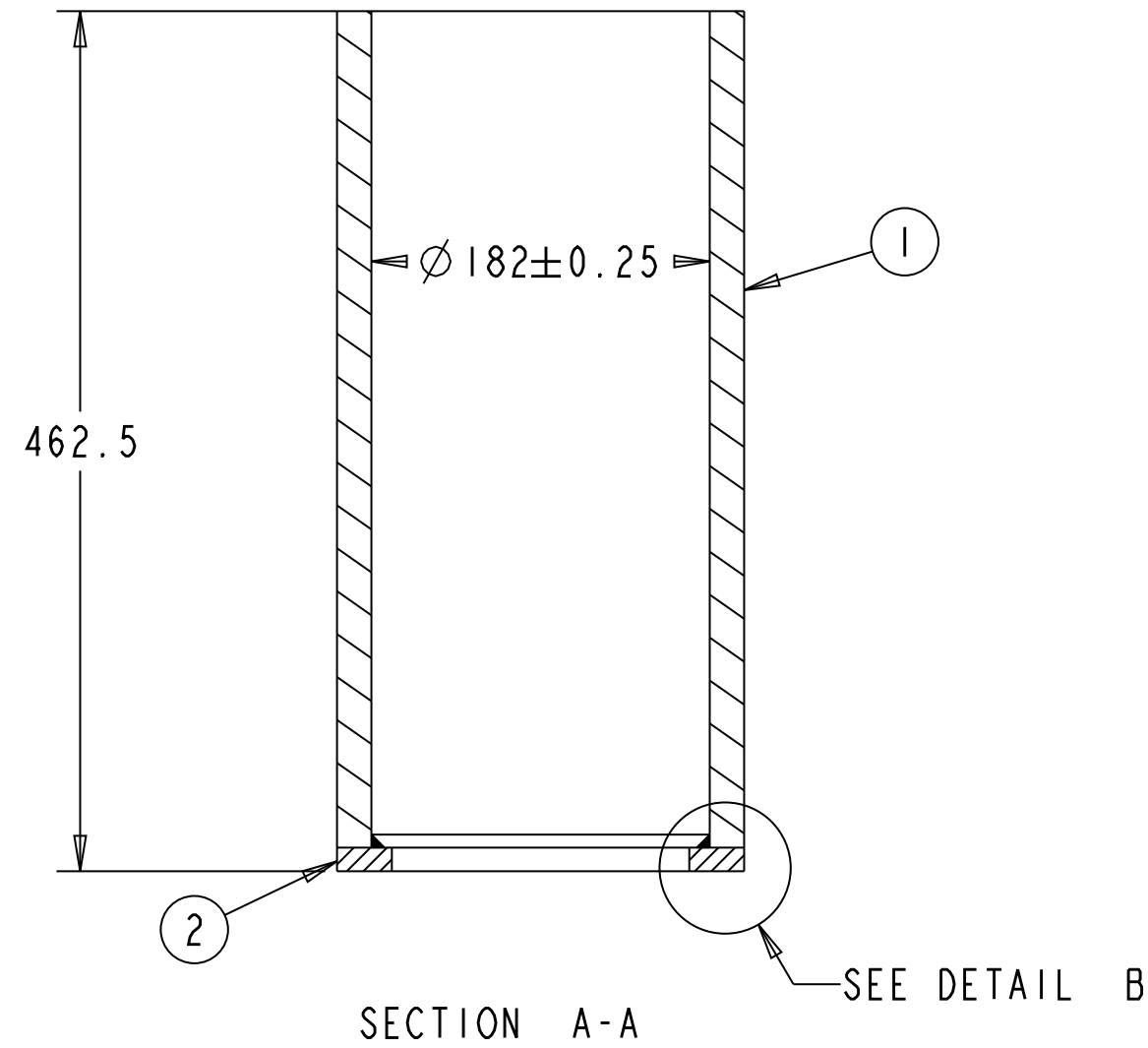
d

c

b

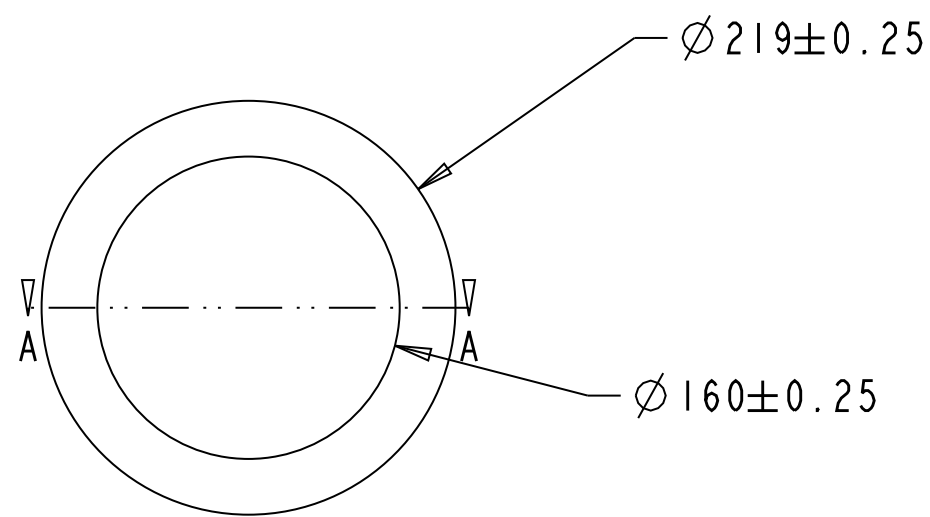
a

| ITEM | DESCRIPTION | MAT'L | QUANTITY |
|------|----------------------------|-------|----------|
| 1 | Quartz Window Sleeve Pipe | ALUM | 1 |
| 2 | Quartz Window Sleeve Plate | ALUM | 1 |
| | | | |
| | | | |
| | | | |
| | | | |
| | | | |
| | | | |
| | | | |



NOTES:

- 1. 1 WILL BE A 8" SCH 140 ALUMINUM 6061 T-6 PIPE WITH ID BORED TO PROPER DIMENSION
- 2. 2 WILL BE MADE FROM A 0.5" ALUMINUM 6061 T-6 PLATE



ALL DIMENSIONS IN mm UNLESS OTHERWISE SPECIFIED
 TOLERANCES UNLESS OTHERWISE SPECIFIED:
 FRACTIONAL DIMENSIONS
 DECIMAL DIMENSIONS XX ± 0.5
 ANGULAR DIMENSIONS ± 0.5°
 SURFACE FINISH MILL FINISH

UNIVERSITY OF ALBERTA
 EDMONTON ALBERTA CANADA

DESIGNED CHRIS NG TELEPHONE (780) 492 5979
 DRAWN CHRIS NG FAX (780) 492 3408
 CHECKED E-MAIL: cjng@ualberta.ca
 APPROVED

| REF. DWGS. | REV. | DATE | REVISION | BY |
|------------|------|------|----------|----|
| | | | | |
| | | | | |
| | | | | |
| | | | | |
| | | | | |
| | | | | |
| | | | | |
| | | | | |
| | | | | |
| | | | | |

CENTER OF PARTICLE PHYSICS

QUARTZ WINDOW SLEEVE WELDED BEFORE MACHINING

SCALE 0.250 APPROVAL DWG. NO. REV.
 DATE MAR 1, 2012 CHIEF ENGR

e

d

c

b

a

